

# SAFETY GUIDELINES

**Clear your drain only if it is safe to do so.** If the drain is still clogged after you've removed the surface debris, call our Public Works Facility to report it.

- For drains in roadways, clear only drains next to the curb. Clear from curbside, not out in the street.
- Be mindful of traffic. Do not clear drains while traffic is passing.
- Be careful of standing water to avoid slipping or stepping on sharp objects that may not be seen.
- If children are helping, make sure adults are supervising.
- Don't try to lift storm drain grates, as they are very heavy. This is to be left up to Public Works personnel only.
- Call Public Works to have crews handle garbage or any hazards in the storm structure. Clear surface debris only.

**The City of Wood Dale maintains the right to terminate the adoption at any time.** The adoptee will hold harmless the City of Wood Dale.

The Adopt-a-Drain program in Wood Dale is administered by the Public Works Department. Wood Dale's storm sewers are part of a system that the City maintains. However, assistance with maintenance from residents or groups is greatly appreciated and welcomed.

## PROGRAM RULES & GUIDELINES

Please contact the Public Works Department, visit [wooddale.com](http://wooddale.com) for program rules and guidelines, or the QR Code below.



[www.wooddale.com](http://www.wooddale.com)  
790 N Central Avenue  
Wood Dale, IL 60191  
(630) 350-3530



# PUBLIC WORKS

## ADOPT-A-DRAIN PROGRAM

[www.wooddale.com](http://www.wooddale.com)

**The City of Wood Dale encourages residents to adopt a stormwater drain to assist with cleaning the grates of debris and making sure the drains are in safe working order.**

## PURPOSE OF THE PROGRAM

Flooding can happen when large storms produce more precipitation than the storm drain system can handle, including when the storm drain grates are blocked. Wood Dale's Public Works crews strive to maintain all sewer systems to the best of their abilities, but it is impossible to check every sewer grate on a regular basis. With the public's help, the overall system can perform properly and help prevent drainage issues around town. These stormwater drains also directly flow into Salt Creek and other local bodies of water.

**Taking steps to manage debris and other possible pollutants from entering these drains is crucial in helping the overall surrounding environment.**

## HOW TO ADOPT-A-DRAIN

If you know of a storm drain that you would like to adopt on your property or in an adjacent right of way, fill out the form in the QR Code below or contact the Public Works Office at (630)-350-3530 to claim your drain.

Once approved, you will receive a safety vest, pair of gloves, and two brown paper bags to assist in cleaning the drains.

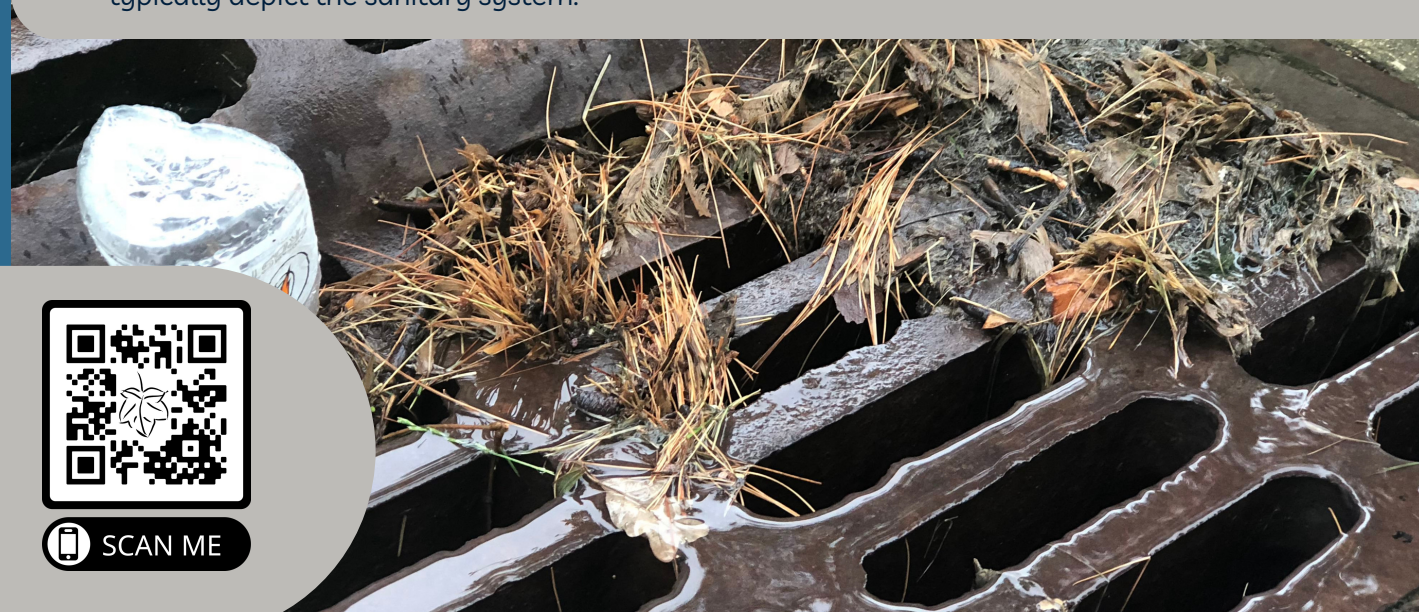
Adopted drains will also be either stenciled or have an emblem placed on the cover that states the drain discharges to local waterways.

## HOW TO IDENTIFY A STORM DRAIN

- Most drains will be located in the curb lane of the street or in the rear/side yard of properties.
- They can be rectangular or circular, but all will have grates for covers. Solid covers typically depict the sanitary system.

## WHAT SHOULD PARTICIPANTS EXPECT & WHERE SHOULD THE DEBRIS GO?

Adopters will be tasked with maintaining the drain's overall upkeep. This will include cleaning any debris from the top and the immediate area of the drain and reporting any issues to Wood Dale's Public Work, such as broken grates or slow drainage. Trash can be disposed of properly either in the recycling or refuse bins. Compostable materials can be discarded in brown landscaping bags with your typical landscaping waste. At no time shall anyone attempt to lift the grates from the structure.



Are there drains available to adopt?

The Public Works Department encourages residents to "Adopt-a-Drain" of their choosing from the map provided in the QR Code.

