

STATE OF ILLINOIS)
) SS
COUNTY OF DU PAGE)

I, Lynn Curiale, City Clerk of Wood Dale, Illinois DO HEREBY CERTIFY that as such City Clerk and keeper of the records, that the foregoing is a true and correct copy of Resolution **#R-23-63 A RESOLUTION APPROVING AMENDMENT NO. 2 TO THE PROFESSIONAL SERVICES AGREEMENT BETWEEN THE CITY OF WOOD DALE AND THOMAS ENGINEERING GROUP, LLC FOR PROFESSIONAL ENGINEERING SERVICES FOR FISCAL YEAR 2023-2025 ROAD PROJECTS IN AN AMOUNT NOT TO EXCEED \$64,892.29**

Passed by The City of Wood Dale, Du Page County, Illinois, IN WITNESS WHERE OF, I have hereunto subscribed my name and affixed the seal of the City of Wood Dale, this 19th day of October, 2023.



Lynn Curiale, City Clerk

SEAL




Resolution #R-23-63

A RESOLUTION APPROVING AMENDMENT NO. 2 TO THE PROFESSIONAL SERVICES AGREEMENT BETWEEN THE CITY OF WOOD DALE AND THOMAS ENGINEERING GROUP, LLC FOR PROFESSIONAL ENGINEERING SERVICES FOR FISCAL YEAR 2023-2025 ROAD PROJECTS IN AN AMOUNT NOT TO EXCEED \$64,892.29

Passed: October 19, 2023
Published in Pamphlet Form: October 20, 2023

I, Lynn Curiale, as the City Clerk for the City of Wood Dale, hereby certify that the attached Resolution is a true and correct copy of #R-23-63
A RESOLUTION APPROVING AMENDMENT NO. 2 TO THE PROFESSIONAL SERVICES AGREEMENT BETWEEN THE CITY OF WOOD DALE AND THOMAS ENGINEERING GROUP, LLC FOR PROFESSIONAL ENGINEERING SERVICES FOR FISCAL YEAR 2023-2025 ROAD PROJECTS IN AN AMOUNT NOT TO EXCEED \$64,892.29
Passed and approved by the City Council of the City of Wood Dale on October 19, 2023 and hereby published in pamphlet on October 20, 2023.


Lynn Curiale, City Clerk



RESOLUTION NO. R-23-63

A RESOLUTION APPROVING AMENDMENT NO. 2 TO THE PROFESSIONAL SERVICES AGREEMENT BETWEEN THE CITY OF WOOD DALE AND THOMAS ENGINEERING GROUP, LLC FOR PROFESSIONAL ENGINEERING SERVICES FOR FISCAL YEAR 2023-2025 ROAD PROJECTS IN AN AMOUNT NOT TO EXCEED \$64,892.29

WHEREAS, the City of Wood Dale (hereinafter referred to as the "City") is a duly organized and existing body politic and corporate governed by the provisions of the Illinois Municipal Code, 65 ILCS 5/1-1-1, *et seq.*, and its own duly adopted Municipal Code; and

WHEREAS, the City is authorized and empowered under the Illinois Municipal Code, and its Ordinances adopted pursuant thereto, to enter into agreements and to contract for goods and services; and

WHEREAS, the Mayor and the City Council of the City seek to ensure that the City is run effectively and efficiently; and

WHEREAS, the Mayor and the City Council of the City, seeks the **THOMAS ENGINEERING GROUP, LLC** for the **PROFESSIONAL ENGINEERING SERVICES FOR FISCAL YEAR 2023-2025 ROAD PROJECTS**; and

WHEREAS, these services are necessary to maintain and promote an effective and efficient City Government; and

WHEREAS, after diligent review of the qualifications and services of **THOMAS ENGINEERING GROUP, LLC**, the Mayor and the City Council find **THOMAS ENGINEERING GROUP, LLC** is the most qualified firm to perform the duties sought by the City; and

NOW, THEREFORE, BE IT RESOLVED BY THE CITY OF WOOD DALE, DUPAGE COUNTY, AN ILLINOIS CORPORATION, as follows:

SECTION 1: The recitals set forth above are incorporated herein and made a part hereof.

SECTION 2: The Mayor is authorized to execute said Agreement on behalf of the City of Wood Dale, which signature shall be attested to by the City Clerk.

SECTION 3: The City Manager, staff and/or the City Attorney shall take the steps necessary to put the terms and conditions of the Agreement into effect.

SECTION 4: That all ordinances and resolutions, or parts thereof in conflict with the provisions of this Resolution are, to the extent of such conflict, hereby repealed.

SECTION 5: That this Resolution shall be in full force and effect from and after its adoption, approval and publication in pamphlet form as provided by law.

PASSED this 19th day of October, 2023.

AYES: 5

NAYS: 0

ABSENT: Aldermen Sakas, Messina, Curiale

APPROVED this 19th day of October, 2023.

SIGNED: Annunziato Pulice
Annunziato Pulice, Mayor

ATTEST: Lynn Curiale
Lynn Curiale, City Clerk

September 25, 2022

Mr. Alan Lange, Director of Public Works
City of Wood Dale
404 N Wood Dale Rd
Wood Dale, IL 60191

Re: **Contract Change Order #2**
Professional Engineering Services for FY 23-26 Capital Road Program

Dear Mr. Lange:

Thomas Engineering Group, LLC (TEG) is providing professional engineering services related to Phase I Preliminary Engineering, Phase II Design Engineering, and Phase III Construction Oversight Services for the City's programmed roadway projects during Fiscal Years 2023, 2024, and 2025. Based on developments in the work and as requested by the City, TEG respectfully requests the City's consideration to amend the professional engineering services Agreement for additional Phase III Construction Oversight Services for the FY 23-24 Capital Road Program and additional Phase II Design Engineering and Phase III Construction Oversight Services for the FY 25 and FY 26 Capital Road Program.

I. Phase III Construction Oversight Services for the FY 23-24 Capital Road Program

The executed Professional Services Agreement the City's Roadway Rehabilitation Projects during Fiscal Years 2023, 2024, and 2025, included compensation for Phase III Construction Oversight services based on 1,140 professional service hours. In addition, Contract Amendment #1 was authorized by the City for an additional 5 weeks of Phase III Construction Oversight services for additional water main installation along Maple Avenue and an additional 4 weeks of Phase III Construction Oversight services for a time extension granted to the Contractor by the City. The total additional time authorized by Amendment #1 was 396 hours based on providing a Project Manager for 4 hours per week and Resident Engineer for 40 hours per week (44 hours x 9 weeks = 396 hours).

Therefore, the total labor budget for Phase III Construction Oversight services for the FY 23-24 Capital Road Program, including Amendment No. 1, was 1,536 hours (1,140 hours + 396 hours). TEG provided 1,861 hours of Phase III Construction Oversight services during construction in 2022 and 2023, resulting in 325 hours of service beyond the original budget. As a courtesy to the City, TEG is willing to offer the City a credit in the amount 157 hours to limit the additional Phase III Construction Oversight services to a matter of 168 hours, or 4 weeks of professional engineering services. TEG believes that the additional services were desired by the City and necessary to satisfactorily complete the FY 23-24 Capital Road Program.



The total amount requested for additional Phase III Construction Oversight Services for the FY 23-24 Capital Road Program is \$19,990.92, based on a total of 168 hours using the Cost Plus Fixed Fee method of compensation found in the original Cost Estimate of Consultant Services. Additional time is summarized below. Refer to Exhibit A for additional details.

- 2 hours per week for the Project Manager x 4 weeks = 8 hours
- 40 hours per week for the Technician x 4 weeks = 160 hours

II. Phase II Design Engineering and Phase III Construction Oversight Services for the FY 25 Capital Road Program

According to the original Agreement, the FY 25 Capital Road Program consists of improving approximately 4,000 linear feet of roadway at three (3) locations in 2024, including Welter Drive, Lincoln Court, and Robin Lane. The City added one location, Potter Street, between Mill Road and Prospect Avenue, a distance of approximately 1,300 linear feet. Refer to Exhibit B.

The total amount requested for additional Phase II Design Engineering and Phase III Construction Oversight Services for the FY 25 Capital Road Program is \$20,402.09 based on a total of 158 hours using the Cost Plus Fixed Fee method of compensation found in the original Cost Estimate of Consultant Services. Additional time is summarized below. Refer to Exhibit C for additional details.

- Design labor = 66 hours
- Construction labor = 92 hours

III. Phase II Design Engineering and Phase III Construction Oversight Services for the FY 26 (formerly FY 24) Capital Road Program

According to the original Agreement, the FY 24 Capital Road Program consists of improving approximately 6,927 linear feet of roadway at six (6) locations, including Ash Avenue, Central Avenue, Dunlay Street, Edgewood Avenue, Hemlock Avenue, and Potter Street. The City added locations, Hiawatha Trail, between Sherwood Drive and the cul-de-sac, and Spruce Avenue, between Hiawatha Trail and Montrose Avenue, a combined distance of approximately 2,250 linear feet.

The total amount requested for additional Phase II Design Engineering and Phase III Construction Oversight Services for the FY 26 Capital Road Program is \$24,499.28 based on a total of 190 hours using the Cost Plus Fixed Fee method of compensation found in the original Cost Estimate of Consultant Services. Additional time is summarized below. Refer to Exhibit D for additional details.

- Design labor = 74 hours
- Construction labor = 116 hours



Contract Change Order #2
Professional Engineering Services for FY 23-26 Capital Road Program
Page | 3

The amount requested for additional work described above is \$64,892.29, detailed as follows.

- \$19,990.92 for the FY 23-24 Capital Road Program
- \$20,402.09 for the FY 25 Capital Road Program
- \$24,499.28 for the FY 26 (formerly FY 24) Capital Road Program

The amount of the original engineering Agreement is \$302,000.00. One prior Amendment was authorized by the City in the amount of \$50,000.00. The total amended amount of the Agreement, including Amendment No. 1 is \$352,000.00.

ORIGINAL CONTRACT:	\$302,000.00
AMENDMENT #1:	\$ 50,000.00
PROPOSED AMENDMENT #2:	<u>\$ 64,892.29</u>
REVISED CONTRACT:	\$416,892.29

TEG respectfully requests the City of Wood Dale's consideration of Contract Amendment #2. It has been a pleasure working on this important project with City staff. Please let us know if you would like additional information.

If you have any questions or require additional information, please call me at (847) 815-9500 or by e-mail at kevinv@thomas-engineering.com.

Sincerely,
thomas engineering group, llc



Kevin C. VanDeWoestyne, P.E., ENV SP
Municipal Department Head

Attachments

cc: Mr. Matt Vitner, P.E., Senior Project Manager, Thomas Engineering Group, LLC



EXHIBIT A: COST PLUS FIXED FEE COST ESTIMATE OF CONSULTANT SERVICES

DF-824-039
REV 12/04

FIRM

Thomas Engineering Group

DATE

09/24/23

PROJECT

Amendment No. 2 (FY 2023)

OVERHEAD RATE

125.45%

PRIME/SUPPLEMENT

Prime

COMPLEXITY FACTOR

0

DBE DROP BOX	ITEM	MANHOURS (A)	PAYROLL (B)	OVERHEAD & FRINGE BENF (C)	IN-HOUSE DIRECT COSTS (D)	FIXED FEE (E)	Outside Direct Costs (F)	SERVICES BY OTHERS (G)	DBE TOTAL (H)	TOTAL (B-G)	% OF GRAND TOTAL
	Construction Services Phase	168	7,617.04	9,555.58		2,818.30				19,990.92	100.00%
	Subconsultant DL					0.00				0.00	0.00%
	TOTALS	168	7,617.04	9,555.58	0.00	2,818.30	0.00	0.00	0.00	19,990.92	100.00%

DBE 0.00%

AVERAGE HOURLY PROJECT RATES

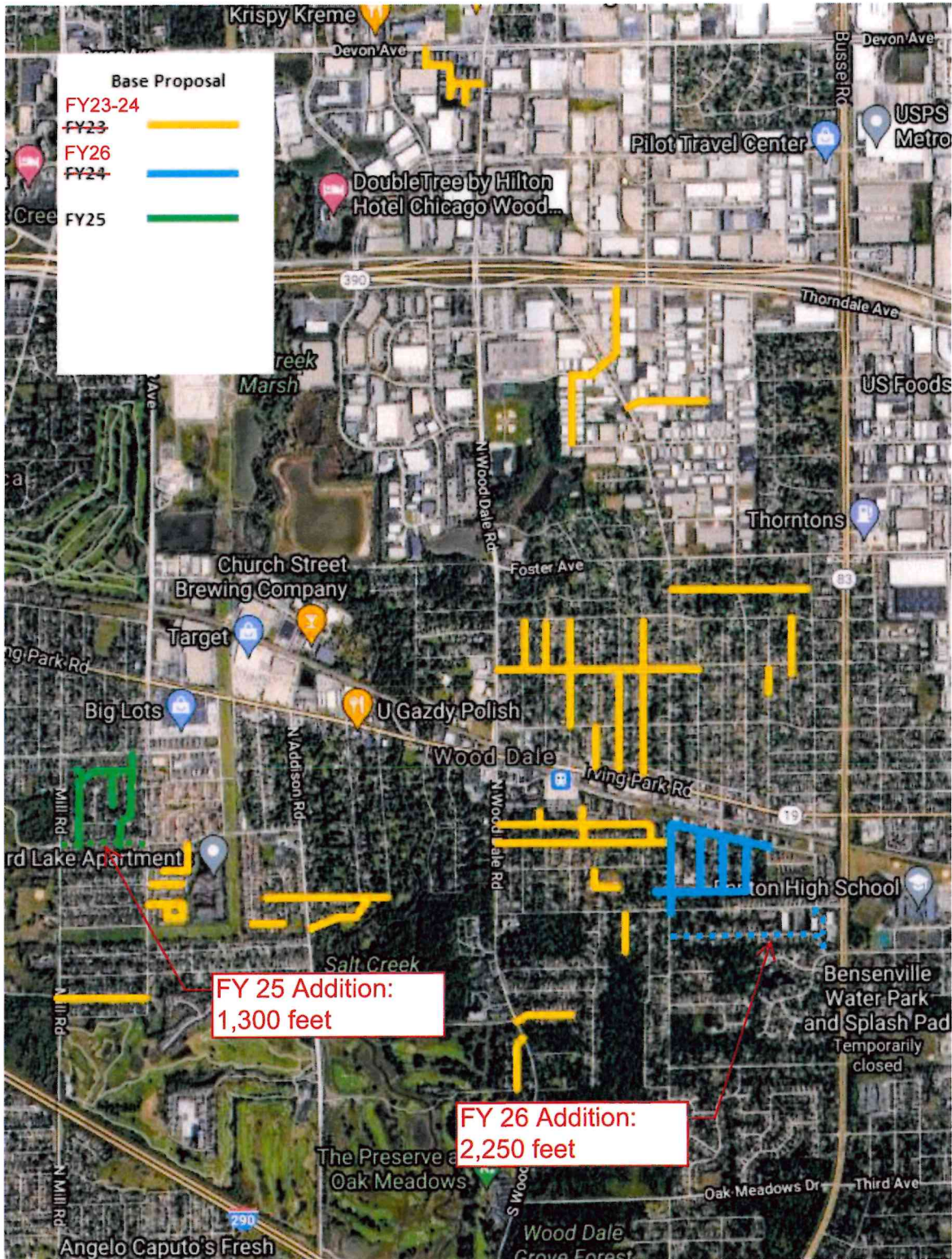
FIRM Thomas Engineering Group
PROJECT Amendment No. 2 (FY 2023)
PRIME/SUPPLEMENT Prime

DATE 09/24/23

SHEET 1 OF 1

PAYROLL CLASSIFICATION	TOTAL PROJECT RATES			Construction Services Phase																
	Hours	% Part.	Wgtd Avg	Hours	% Part.	Wgtd Avg	Hours	% Part.	Wgtd Avg	Hours	% Part.	Wgtd Avg	Hours	% Part.	Wgtd Avg	Hours	% Part.	Wgtd Avg		
President/Principal	0			0			0			0			0			0			0	
Project Manager/Senior Resident Engineer	8	4.76%	3.10	8	4.76%	3.10														
Project/Resident Engineer V	0																			
Project/Resident Engineer IV	0																			
Project/Resident Engineer III	160	95.24%	42.24	160	95.24%	42.24														
Project/Resident Engineer II	0																			
Project/Resident Engineer I	0																			
Chief Surveyor	0																			
Technical Manager	0																			
Senior Technician	0																			
Technician III	0																			
Technician II	0																			
Technician I	0																			
Design/Construction Intern	0																			
	0																			
	0																			
	0																			
	0																			
	0																			
	0																			
	0																			
	0																			
TOTALS	168	100%	\$45.34	168	100.00%	\$45.34	0	0%	\$0.00	0	0%	\$0.00	0	0%	\$0.00	0	0%	\$0.00	0	0%

EXHIBIT B Map – Amendment



GENERAL REQUIREMENTS

Professional Engineering Services for FY23-FY25 Road Projects

1. INTENT

The City of Wood Dale desires to enter into an agreement with a single Engineering Firm to design and oversee construction services for a street improvement project as specified in the Scope of Services.

2. SCOPE OF SERVICES

Scope of Services

Background

Yearly, the City of Wood Dale, through the Capital Improvements Plan, selects streets throughout town that are in need of resurfacing. Work for this project will include asphalt surface removal and replacement, as well as replacement of deteriorated sections of curb and gutter, and the replacement of non-ADA compliant sidewalk ramps. In certain areas, additional storm sewer improvements may be required and are indicated in the program below.

It is anticipated that the City will be receiving a line item appropriation of \$3,000,000 from the State Capital Bill for costs associated with street resurfacing in FY23. Work associated with coordinating these funds through the Department of Commerce and Economic Opportunity should be included in the base proposal. Should the funds be delayed or not received for any reason, the City may elect to pursue an alternate program as specified below. The street lists below are anticipated but may change at the discretion of the City up to the point of Preliminary Information Gathering.

Base Proposal Capital Funds Received for FY23

Key:

- * Denotes possible reconstruction
- ^ Requires additional storm sewer improvements

~~FY23 (Construction summer 2022) – Base Proposal~~ **FY23-24 (Construction summer 2022-23)**

Street Name	From	To	Approximate Length (LF)
Catalpa	Irving Park Road	Elmhurst	2,514
Maple	Irving Park Road	Stoneham	1,666
Cedar	Irving Park Road	Commercial	707
Oak	Commercial	Elmhurst	1,645
Stoneham	Wood Dale Road	Hemlock	3,088
Elmwood	Stoneham	Elmhurst	763
Walnut	Stoneham	Elmhurst	761
Pine	Commercial	Stoneham	883
Poplar	Commercial	Elmhurst	1,650
Itasca	Central	Spruce	2,143
Arlene*^	Mill	Prospect	1,341

City of Wood Dale, Illinois
Professional Engineering Services for FY23-FY25 Road Projects

Creel^	Beinoris	Sivert	1,048
Sivert	Creel	S Thorndale	1,813
Richert	Central	Dillon	1,234
Windsor	Wood Dale Road	Central	2,643
Potter	Wood Dale Road	Catalpa	2,321
Catalpa	Windsor	Potter	290
Cedar	Windsor	End	556
Elmwood	Potter	Carey Trail	293
Cara	Cedar	End	341
Iroquois	Montrose	End	616
Brookhurst	Wood Dale Road	End	831
Elizabeth Ct	Wood Dale Road	End	857
Clare Ct	Potter	End	749
Sarah Ct	Prospect	End	614
Victoria	Prospect	Jason	276
Jason	Victoria	Victoria	411
Carter^	End	Forest View	1,843
Charmille	Addison Road	Carter	1,090
Manning	Paramount	Century	508
Blackhawk Cir	End	Driscoll	375
Blackhawk Ct	Bristol	Driscoll	275
Bristol	End	Blackhawk Ct	390
Driscoll	Blackhawk Cir	Wood Dale Road	235
Bristol	Blackhawk Ct	Devon	745

~~FY24 (Construction summer 2023) – Base Proposal~~ **FY26 (Construction summer 2025)**

Street Name	From	To	Approximate Length (LF)
Ash	Dunlay	Potter	771
Central	Montrose	Potter	1,274
Dunlay	End	Spruce	2,144
Edgewood	Dunlay	Potter	715
Hemlock	Dunlay	Potter	853
Potter	Central	Pine	1,170
Hiawatha Trail	End	Sherwood	2,250

~~FY25 (Construction summer 2024) – Base Proposal~~ **FY25 (Construction summer 2024)**

Street Name	From	To	Approximate Length (LF)
Welter	Potter	Robin	1,964
Lincoln	Welter	End	530
Robin	Potter	George	1,508
Potter Street	Mill	Prospect	1,300

AVERAGE HOURLY PROJECT RATES

FIRM Thomas Engineering Group
PROJECT Amendment No. 2 (FY 2025)
PRIME/SUPPLEMENT Prime

DATE 09/24/23

SHEET 1 OF 2

PAYROLL CLASSIFICATION	AVG HOURLY RATES	TOTAL PROJECT RATES			Preliminary Information G			Study and Report Phase			Preliminary Design Phase			Final Design Phase			Bidding and Negotiation		
		Hours	% Part.	Wgtd Avg	Hours	% Part.	Wgtd Avg	Hours	% Part.	Wgtd Avg	Hours	% Part.	Wgtd Avg	Hours	% Part.	Wgtd Avg	Hours	% Part.	Wgtd Avg
President/Principal	70.00	4	2.53%	1.77															
Project Manager/Senior Resident Engineer	65.13	26	16.46%	10.72	2	16.67%	10.86	1	20.00%	14.00	1	4.35%	3.04	1	33.33%	23.33	2	86.67%	43.42
Project/Resident Engineer V	60.00	0																	
Project/Resident Engineer IV	58.42	0																	
Project/Resident Engineer III	44.35	76	48.10%	21.33															
Project/Resident Engineer II	32.65	28	17.72%	5.79	2	16.67%	5.44	2	40.00%	13.06	12	52.17%	17.03	12	52.17%	17.03			
Project/Resident Engineer I	28.40	0																	
Chief Surveyor	59.30	0																	
Technical Manager	50.10	0																	
Senior Technician	44.44	16	10.13%	4.50															
Technician III	47.40	0																	
Technician II	31.50	8	5.06%	1.59	8	66.67%	21.00												
Technician I	28.77	0																	
Design/Construction Intern	17.00	0																	
		0																	
		0																	
		0																	
		0																	
		0																	
		0																	
		0																	
		0																	
		0																	
		0																	
TOTALS		158	100%	\$45.70	12	100.00%	\$37.30	5	100%	\$53.11	23	100%	\$41.20	23	100%	\$41.20	3	100%	\$66.75

EXHIBIT D: COST PLUS FIXED FEE COST ESTIMATE OF CONSULTANT SERVICES

DF-824-039
REV 12/04

FIRM Thomas Engineering Group	DATE 09/24/23	
PROJECT Amendment No. 2 (FY 2026)	OVERHEAD RATE 125.45%	
PRIME/SUPPLEMENT Prime	COMPLEXITY FACTOR 0	

DBE DROP BOX	ITEM	MANHOURS (A)	PAYROLL (B)	OVERHEAD & FRINGE BENF (C)	IN-HOUSE DIRECT COSTS (D)	FIXED FEE (E)	Outside Direct Costs (F)	SERVICES BY OTHERS (G)	DBE TOTAL (H)	TOTAL (B-G)	% OF GRAND TOTAL
	Preliminary Information Gathering	12	447.56	561.46		165.60		1,850.00		3,024.62	12.35%
	Study and Report Phase	5	265.56	333.15		98.26				696.96	2.84%
	Preliminary Design Phase	27	1,078.18	1,352.58		398.93				2,829.68	11.55%
	Final Design Phase	27	1,078.18	1,352.58		398.93				2,829.68	11.55%
	Bidding and Negotiation	3	200.26	251.23		74.10				525.58	2.15%
	Construction Services Phase	96	4,590.08	5,758.26		1,698.33				12,046.66	49.17%
	Contractors Completion Phase	20	970.12	1,217.02		358.94				2,546.08	10.39%
	Subconsultant DL					0.00				0.00	0.00%
	TOTALS	190	8,629.94	10,826.26	0.00	3,193.08	0.00	1,850.00	0.00	24,499.28	100.00%

DBE 0.00%

AVERAGE HOURLY PROJECT RATES

FIRM Thomas Engineering Group
PROJECT Amendment No. 2 (FY 2026)
PRIME/SUPPLEMENT Prime

DATE 09/24/23

SHEET 1 OF 2

PAYROLL CLASSIFICATION	AVG HOURLY RATES			TOTAL PROJECT RATES												Preliminary Information G			Study and Report Phase			Preliminary Design Phase			Final Design Phase			Bidding and Negotiation		
	Hours	% Part.	Wgtd Avg	Hours	% Part.	Wgtd Avg	Hours	% Part.	Wgtd Avg	Hours	% Part.	Wgtd Avg	Hours	% Part.	Wgtd Avg	Hours	% Part.	Wgtd Avg	Hours	% Part.	Wgtd Avg	Hours	% Part.	Wgtd Avg	Hours	% Part.	Wgtd Avg			
President/Principal	4	2.11%	1.47																											
Project Manager/Senior Resident Engineer	30	15.79%	10.28																											
Project/Resident Engineer V	0																													
Project/Resident Engineer IV	0																													
Project/Resident Engineer III	96	50.53%	22.41																											
Project/Resident Engineer II	36	18.95%	6.19																											
Project/Resident Engineer I	0																													
Chief Surveyor	0																													
Technical Manager	0																													
Senior Technician	16	8.42%	3.74																											
Technician III	0																													
Technician II	8	4.21%	1.33																											
Technician I	0																													
Design/Construction Intern	0																													
	0																													
	0																													
	0																													
	0																													
	0																													
	0																													
	0																													
	0																													
TOTALS	190	100%	\$45.42																											

AVERAGE HOURLY PROJECT RATES

FIRM
PROJECT
PRIME/SUPPLEMENT

Thomas Engineering Group
Amendment No. 2 (FY 2026)
Prime

DATE 09/24/23

SHEET 2 OF 2

PAYROLL CLASSIFICATION	AVG HOURLY RATES	Construction Services Phase			Contractors Completion Phase			Phase 1			Phase 2			Phase 3		
		Hours	% Part.	Wgtd Avg	Hours	% Part.	Wgtd Avg	Hours	% Part.	Wgtd Avg	Hours	% Part.	Wgtd Avg	Hours	% Part.	Wgtd Avg
President/Principal	70.00															
Project Manager/Senior Resident Engineer	65.13	16	16.67%	10.86	4	20.00%	13.03									
Project/Resident Engineer V	60.00															
Project/Resident Engineer IV	58.42															
Project/Resident Engineer III	44.35	80	83.33%	36.96	16	80.00%	35.48									
Project/Resident Engineer II	32.65															
Project/Resident Engineer I	28.40															
Chief Surveyor	59.30															
Technical Manager	50.10															
Senior Technician	44.44															
Technician III	47.40															
Technician II	31.50															
Technician I	28.77															
Design/Construction Intern	17.00															
TOTALS		96	100%	\$47.81	20	100%	\$48.51	0	0%	\$0.00	0	0%	\$0.00	0	0%	\$0.00

AMENDMENT NO. 2 TO THE PROFESSIONAL SERVICES AGREEMENT BETWEEN
THE CITY OF WOOD DALE, ILLINOIS, AND THOMAS ENGINEERING GROUP, LLC
FOR PROFESSIONAL ENGINEERING SERVICES FOR FISCAL YEAR 2023 THROUGH
2025 ROAD PROJECTS

R E C I T A L S

WHEREAS, the Illinois General Assembly has granted the CITY authority to enter into agreements for the purposes of providing professional services (pursuant to Municipal Code, 65 ILCS 5/1-1-10, et. seq.); and,

WHEREAS, on February 17, 2022, the City Council of the CITY OF WOOD DALE, a body politic and corporate, with offices at 404 North Wood Dale Road, Wood Dale, Illinois 60191 (hereinafter the "CITY") passed a Resolution to approve a Professional Service Agreement with THOMAS ENGINEERING GROUP, LLC, licensed to do business in the State of Illinois, with offices at 762 Shoreline Drive, Suite 200, Aurora, Illinois 60504 (hereinafter the "CONSULTANT"), hereinafter together referred to as the "PARTIES", in the amount of \$302,000.00 for professional engineering services related to Phase I Preliminary Engineering, Phase II Design Engineering, and Phase III Construction Oversight services for the CITY'S programmed Roadway Rehabilitation Projects during Fiscal Years 2023, 2024, and 2025; and,

WHEREAS, on October 20, 2022, the CITY passed a Resolution authorizing Amendment No. 1 to the Agreement in the amount of \$50,000.00 for additional Phase II Design Engineering services related to water main installation on Maple Avenue, between Irving Park Road and Stoneham Street, and additional Phase III Construction Oversight services related to additional construction time, granted by the CITY, from May 31, 2023 to June 30, 2023; and

WHEREAS, additional Phase III Construction Oversight services for the FY 23-24 Capital Road Program were provided by the CONSULTANT for work related to the satisfactory completion and closeout of the FY 23-24 Capital Road Program; and,

WHEREAS, additional Phase II Design Engineering and Phase III Construction Oversight Services for the FY 25 Capital Road Program were requested by the CITY and will be provided by the CONSULTANT for additional work related to Potter Street improvements, between Mill Road and Prospect Avenue; and

WHEREAS, additional Phase II Design Engineering and Phase III Construction Oversight Services for the FY 26 Capital Road Program were requested by the CITY and will be provided by the CONSULTANT for additional work related to Hiawatha Trail improvements, between Sherwood Drive and the end, and Spruce Avenue improvements, between Hiawatha Trail and Montrose Avenue; and

WHEREAS, the CONSULTANT has experience and expertise in this area and is in the business of providing such professional engineering services and is willing to perform the required services for an amount not to exceed \$64,892.29; and,

NOW, THEREFORE, in consideration of the premises, the mutual covenants, terms, and conditions herein set forth, and the understandings of each PARTY to the other, the PARTIES do hereby mutually covenant, promise and agree as follows:

IN WITNESS OF, the PARTIES set their hands and seals as of the date first written above.

CITY OF WOOD DALE

THOMAS ENGINEERING GROUP, LLC

BY: *Nunzio Pulice*
NUNZIO PULICE
MAYOR

BY: *[Signature]*
KEVIN C. VANDEWOESTYNE, P.E., ENV SP
MUNICIPAL DEPARTMENT HEAD

ATTEST BY:

ATTEST BY:

[Signature]
LYNN CURIALE
CITY CLERK

[Signature]
ROBERT E. FLATTER, P.E.
SENIOR PROJECT MANAGER



EXHIBIT A

This Exhibit includes the amendment submitted by THOMAS ENGINEERING GROUP, LLC, titled “CONTRACT CHANGE ORDER #2, PROFESSIONAL ENGINEERING SERVICES FOR FY 23-26 CAPITAL ROAD PROGRAM”, as prepared by Kevin C. VanDeWoestyne, P.E., ENV SP, Municipal Department Head, dated September 25, 2022, consisting of 14 pages with fee schedules).