



CITY OF
WOOD DALE,
ILLINOIS

Area 6

Proposed Conditions

Alternate 1

"Conveyance Improvements"



Area 6

Legend

- Proposed Storm Sewer
- + Proposed Inlet
- Existing Storm Sewer

Engineer's Estimate
of Probable Cost =
\$3,395,766

Exhibit 7



1 inch = 200 feet





CITY OF
WOOD DALE,
ILLINOIS

Area 6

Proposed Conditions

Alternate 2

"Online Detention"



Area 6

Legend

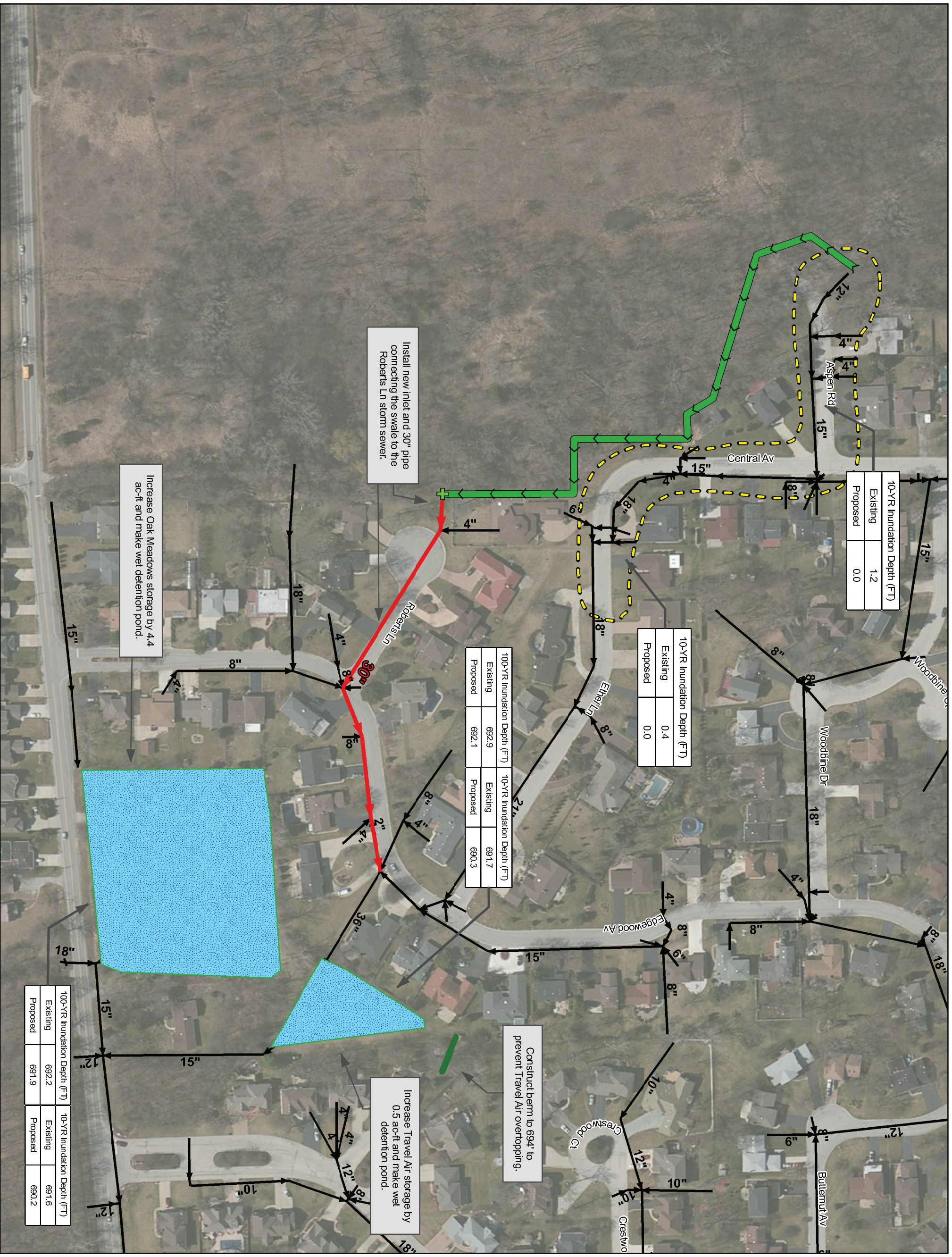
- + Proposed Inlet
- Proposed Storm Sewer
- Existing Storm Sewer

**Engineer's Estimate
of Probable Cost =
\$1,918,166**

Exhibit 8



1 inch = 200 feet



CITY OF
WOOD DALE,
ILLINOIS

Area 8

Proposed Conditions

Alternate 1

"Diversion Ditch"



Legend

- Proposed Inlet
- Wet Detention Pond
- Proposed Berm
- Proposed Swale
- Proposed Storm Sewer
- Existing Storm Sewer

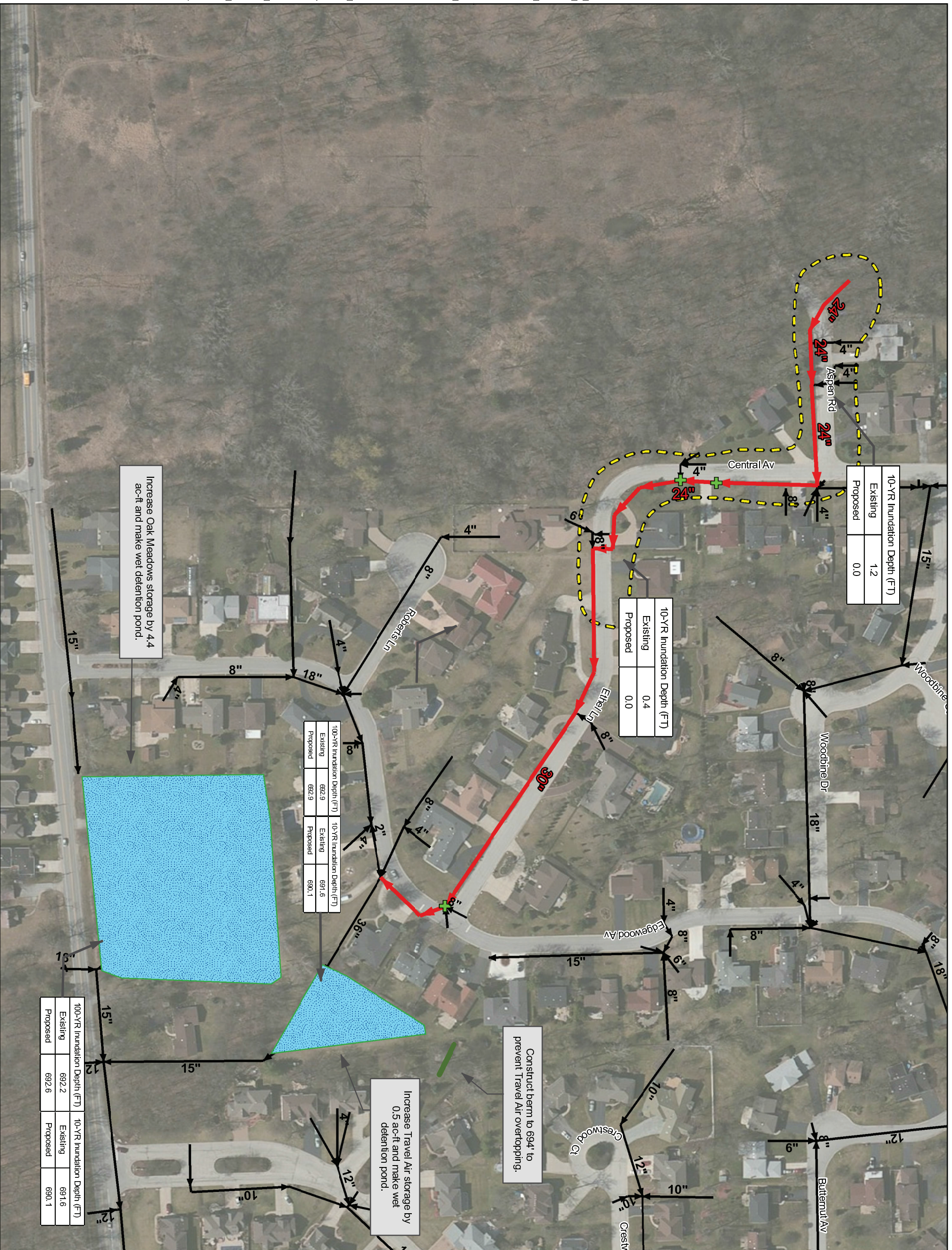
**Engineer's Estimate
of Probable Cost =
\$1,002,473**

Exhibit 9



1 inch = 150 feet





CITY OF
WOOD DALE,
ILLINOIS

Area 8

Proposed Conditions


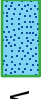



Alternate 2

"Central / Ethel Storm Sewer"



Area 8

Legend

-  Proposed Inlet
-  Wet Detention Pond
-  Proposed Berm
-  Proposed Storm Sewer
-  Existing Storm Sewer

**Engineer's Estimate
of Probable Cost =
\$1,401,028**

Exhibit 10



1 inch = 150 feet

