

CITY OF WOOD DALE, ILLINOIS

Area 11

Proposed Conditions




Alternate 2

"North and South Outlet"



Area 11

Legend

-  Proposed Inlet
-  Proposed Storm Sewer
-  Existing Storm Sewer

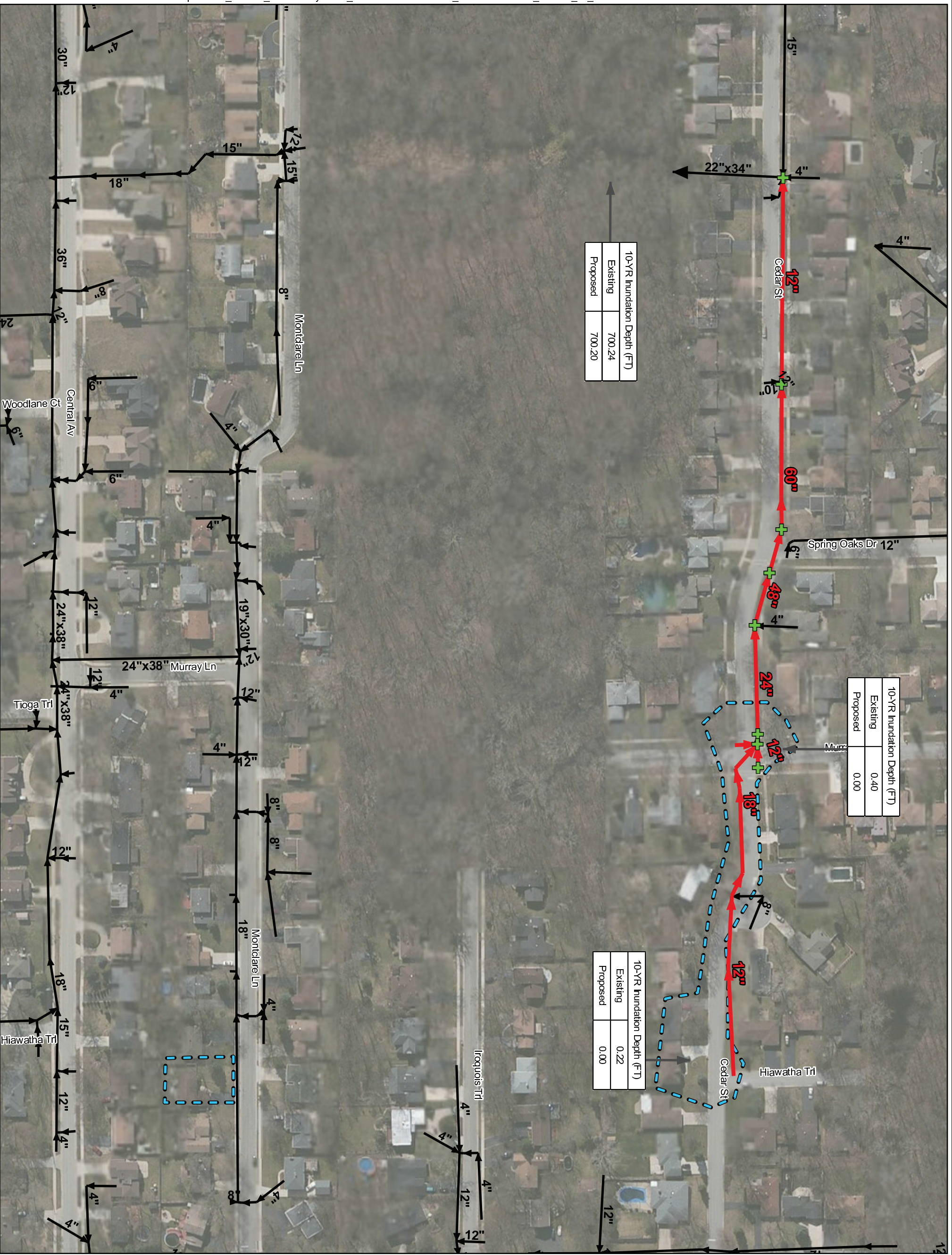
Engineer's Estimate of Probable Cost = \$1,575,857

Exhibit 14



1 inch = 350 feet





CITY OF
WOOD DALE,
ILLINOIS




Area 11

Proposed Conditions

Alternate 3

*"South Outlet with
Online Detention"*

 Area 11

- Legend**
-  Proposed Inlet
 -  Proposed Sewer
 -  Existing Storm Sewer

Engineer's Estimate
of Probable Cost =
\$819,292

Exhibit 15



1 inch = 150 feet