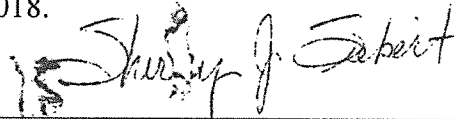


STATE OF ILLINOIS     )  
  ) SS  
COUNTY OF DU PAGE    )

I, Shirley J. Siebert, City Clerk of Wood Dale, Illinois DO HEREBY CERTIFY that as such City Clerk and keeper of the records, that the foregoing is a true and correct copy of Resolution #R-18-56 A RESOLUTION SEEKING APPROVAL OF PURCHASE OF ROOT CUTTER AND NOZZLES FROM STANDARD EQUIPMENT IN AN AMOUNT NOT THE EXCEED \$15,910.00

, To The City Of Wood Dale, DuPage County, Illinois, IN WITNESS WHEREOF, I have hereunto Subscribed my name and affixed the seal of the City of Wood Dale, this 16TH day of August, 2018.



---

Shirley J. Siebert, City Clerk  
City of Wood Dale  
DuPage County, Illinois

SEAL



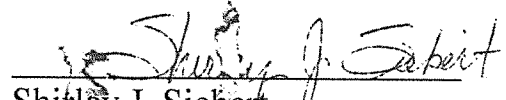
**Resolution #R-18-56**

**A RESOLUTION SEEKING APPROVAL OF PURCHASE OF ROOT CUTTER  
AND NOZZLES FROM STANDARD EQUIPMENT IN AN AMOUNT NOT THE  
EXCEED \$15,910.00**

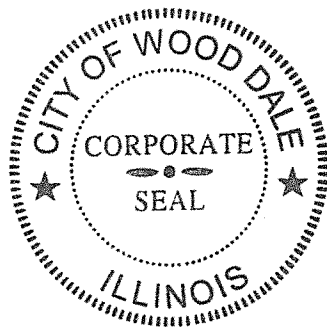
Passed: August 16, 2018  
Approved: August 16, 2018

I, Shirley J. Siebert, as the Clerk for the City of Wood Dale, hereby certify that the attached is a true and correct copy of **#R-18-56 A RESOLUTION SEEKING APPROVAL OF PURCHASE OF ROOT CUTTER AND NOZZLES FROM STANDARD EQUIPMENT IN AN AMOUNT NOT THE EXCEED \$15,910.00**

passed and approved by the by the City Council of the City of Wood Dale on August 16, 2018 and hereby published in pamphlet form on August 16, 2018.

  
Shirley J. Siebert  
City Clerk

SEAL



## RESOLUTION NO. R-18-56

**A RESOLUTION SEEKING APPROVAL OF PURCHASE OF ROOT CUTTER AND NOZZLES FROM STANDARD EQUIPMENT IN AN AMOUNT NOT TO EXCEED \$15,910.00**

**WHEREAS**, the City of Wood Dale (hereinafter the "City") is a body politic and corporate, organized and existing pursuant to the Illinois Municipal Code, 65 ILCS 5/1-1-1 *et seq.*; and

**WHEREAS**, the City is authorized and empowered under the Illinois Municipal Code, and its Ordinances adopted pursuant thereto, to enter into agreements and to contract for goods and services; and

**WHEREAS**, the Mayor and the City Council of the City seek to ensure that the City is run effectively and efficiently; and

**WHEREAS**, the Mayor and the City Council of the City, seeks the Standard Equipment for the Root Cutting System; and

**WHEREAS**, these services are necessary to maintain and promote an effective and efficient City Government; and

**WHEREAS**, after diligent review of the qualifications and services of Standard Equipment the Mayor and the City Council find Standard Equipment is the most qualified firm to perform the duties sought by the City; and

**NOW, THEREFORE, BE IT RESOLVED BY THE CITY OF WOOD DALE, DUPAGE COUNTY, AN ILLINOIS CORPORATION, as follows:**

**SECTION 1:** The recitals set forth above are incorporated herein and made a part hereof.

SECTION 2: The Mayor is authorized to execute said Agreement on behalf of the City of Wood Dale, which signature shall be attested to by the City Clerk.

SECTION 3: The City Manager, staff and/or the City Attorney shall take the steps necessary to put the terms and conditions of the Agreement into effect.

SECTION 4: That all ordinances and resolutions, or parts thereof in conflict with the provisions of this Resolution are, to the extent of such conflict, hereby repealed.

SECTION 5: That this Resolution shall be in full force and effect from and after its adoption, approval and publication in pamphlet form as provided by law.

PASSED this 16<sup>th</sup> day of August 2018

AYES: 7

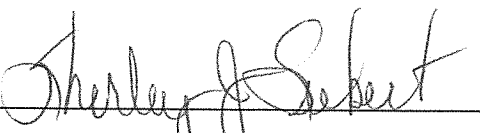
NAYS: 6

ABSENT: Alderman Catalano

APPROVED this 16<sup>th</sup> day of August 2018

SIGNED: Annunziato Pulice  
Annunziato Pulice, Mayor

ATTEST:

  
Shirley J. Siebert, City Clerk

2033 WEST WALNUT STREET • CHICAGO, IL 60612 • 312/829-1919 • FAX 312/829-6142  
E-MAIL: sales@standardequipment.com • INTERNET: http://www.standardequipment.com



City of Wood Dale  
Attn: Ken Rubach  
Assistant Public Works Director  
404 N Wood Dale Road  
Wood Dale, IL 60191

July 18, 2018

Standard Equipment Company is pleased to present the following quote on an KEG sewer cleaning nozzles and root cutter. Quotation and terms shown valid for 30 days. Please see included catalog for unit features. Terms are as follows:

KEG OMG Nozzle	\$2,920.00
KEG Supernova 4000 Root Cutter (6"-16" pipe)	\$10,524.00
KEG Supernova 4000 Extension Kit for up to 24" pipe	\$2,466.00

- Delivery 60-90 days after receipt of PO
- Payment Due in full at time of Delivery

Thank you for the opportunity to quote you on your sewer cleaning needs. Please contact me if you have any questions on this quote.

Best Regards,

*Bob Donlon*

Bob Donlon, Account Manager  
bdonlon@standardequipment.com  
Main: 312.829.1919 | Cell: 847.804.6017  
2033 W Walnut St. Chicago, IL 60612

Attachment: Committee Packet - Root Cutter (R-18-56 : Root Cutter)

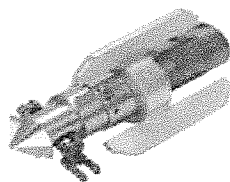


The Difference Is Performance!

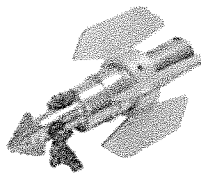
# CHAIN CUTTER FAMILY

The only match for the toughest obstructions!

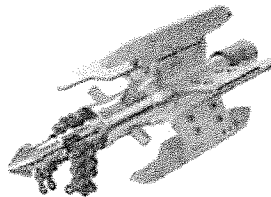
KEG offers five models for customers with root infiltration, grease, concrete, protruding taps, and scaling problems. We offer the Micro Chain Cutter in 2" to 4" applications, Mini Chain Cutter in 4" to 10" applications, the Super Cutter Plus 150 for 6" to 24" pipes, the Super Cutter Plus 200 for pipes 8" to 48", and finally the Supernova 4000 Chain Cutter for 6" to 48" pipe, all with one Cutter. Let us show you the power and capabilities of our Cutter Family with a demonstration. KEG's family of chain cutters has the flexibility to handle the removal of the heaviest obstructions, while being gentle on pipe walls.



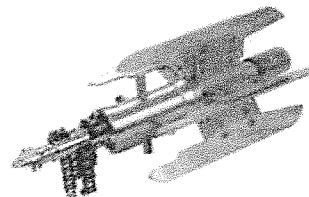
Micro Cutter  
(2"-6")



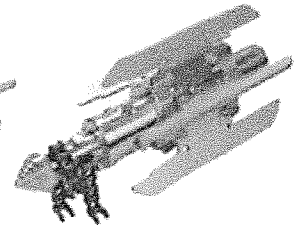
Mini Cutter  
(4"-10")



SCP 150 Cutter  
(6"-24")



SCP 200 Cutter  
(8"-48")



SN 4000 Cutter  
(6"-48")

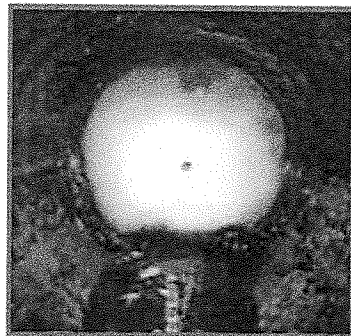
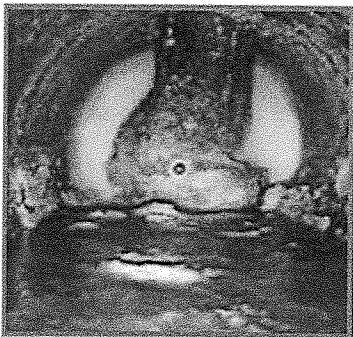
### Superior Design, Construction, Performance & Flexibility

KEG's chain cutters are made of stainless steel and offer superior thrust and drive efficiency. Stabilized by stainless steel guide carriage skids, the cutters feature a unique spinner nozzle design that rotates the main shaft, spinning the attached chains at 2,500 RPM. The cross cutter bit installed on the front of the shaft also serves as a penetrating bit to "bore" into the root or obstruction. Chains can be configured for grease or scale removal, or for root removal.


### Ease of Configuration & Maintenance

The ease of field configuration is a definite plus for the operator. Installation of replacement chain, or skid configuration for larger diameters, is a simple matter and is quickly done in the field. Standard maintenance and cleaning is easy and prolongs the service life of the cutter. KEG Chain Cutters also feature a 2 year limited warranty and come configured with titanium ceramic inserts for better performance. Finally, no lubrication (other than the HP Swivel joint at the hose connection) is required to operate a KEG Chain Cutter. Cutters can be maintained with a gentle soap or detergent and water.

Chain Cutter In Action



Always clean and video before operating any chain cutter and follow operating guidelines in the cutter manual. Contact a local expert for complimentary training & installation.



Attachment: Committee Packet - Root Cutter (R-18-56 : Root Cutter)